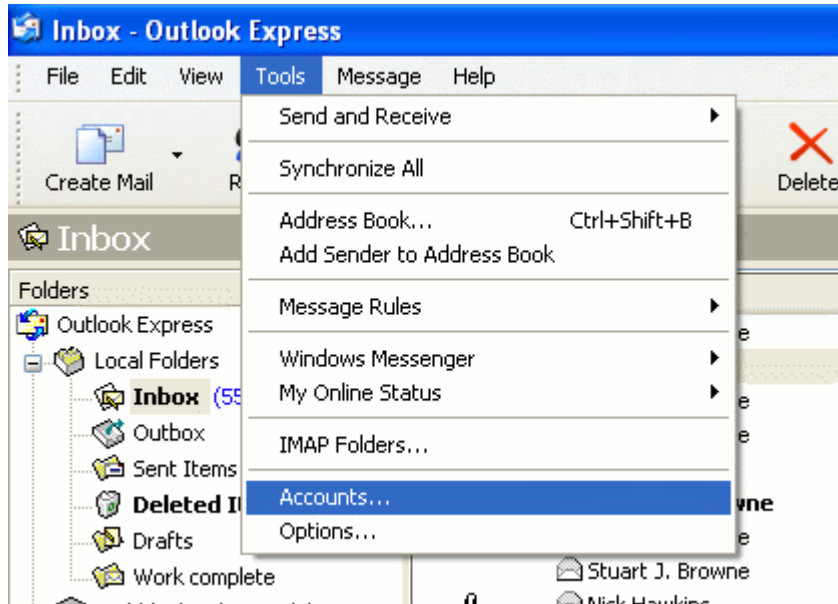
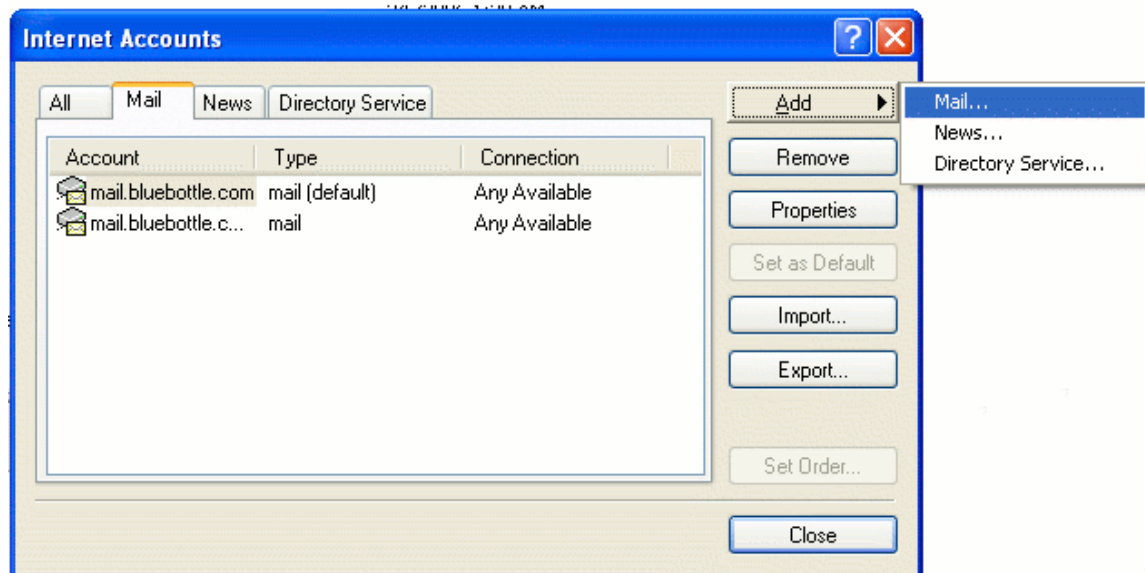


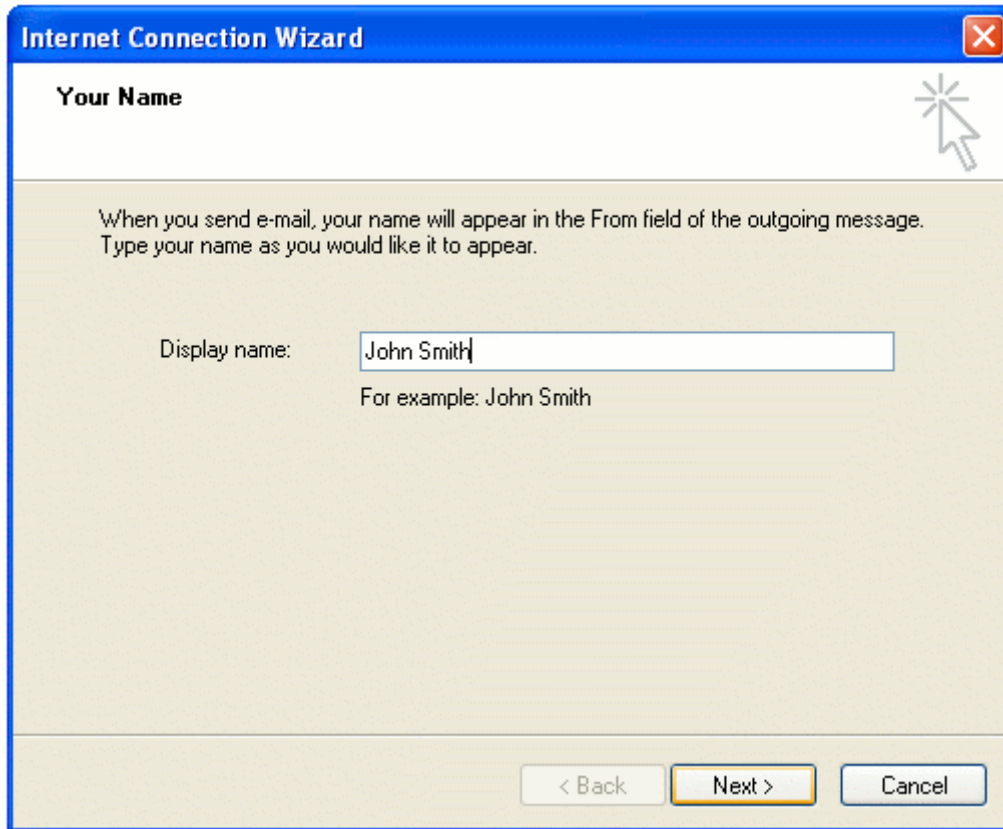
Bluebottle & Outlook Express



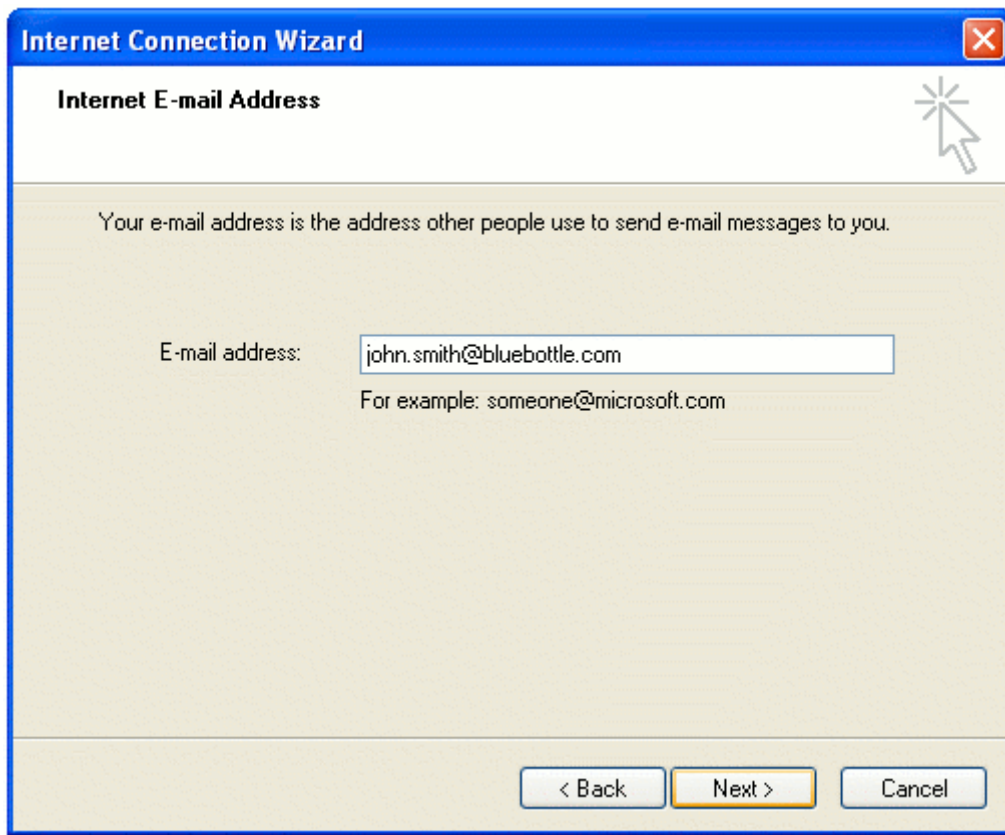
1. Select 'Tools' -> 'Accounts'



2. Click on the 'Add' button and select 'Mail'.

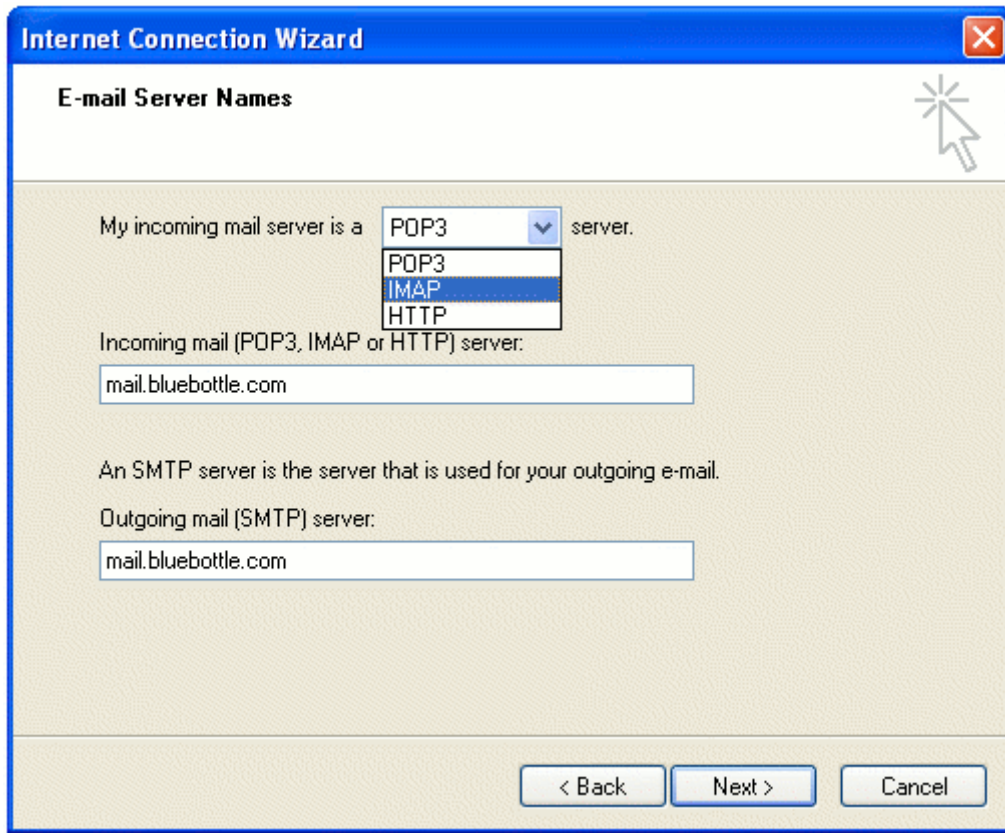


3. Enter your desired 'Display Name' (emails you send will be marked as being sent by this name).



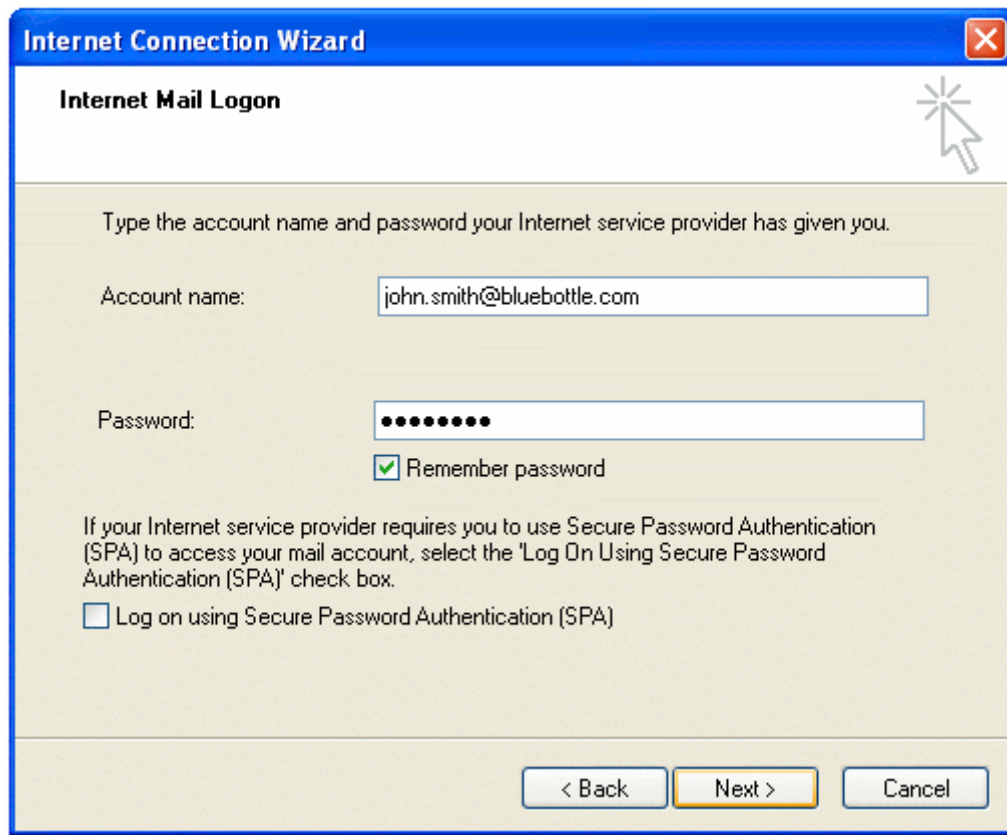
The screenshot shows a Windows-style dialog box titled "Internet Connection Wizard" with a close button in the top right corner. The main heading is "Internet E-mail Address". Below the heading is a mouse cursor icon. The text reads: "Your e-mail address is the address other people use to send e-mail messages to you." There is a text input field containing "john.smith@bluebottle.com". Below the field is the text "For example: someone@microsoft.com". At the bottom of the dialog are three buttons: "< Back", "Next >" (highlighted with a yellow border), and "Cancel".

4. Enter your Bluebottle email address.



5. Choose whether you want to setup a POP3 or IMAP account (Freemail customers may only create POP3 accounts).

Enter 'mail.bluebottle.com' for both the Incoming and Outgoing server.



Internet Connection Wizard

Internet Mail Logon

Type the account name and password your Internet service provider has given you.

Account name: john.smith@bluebottle.com

Password: ●●●●●●●●●●

Remember password

If your Internet service provider requires you to use Secure Password Authentication (SPA) to access your mail account, select the 'Log On Using Secure Password Authentication (SPA)' check box.

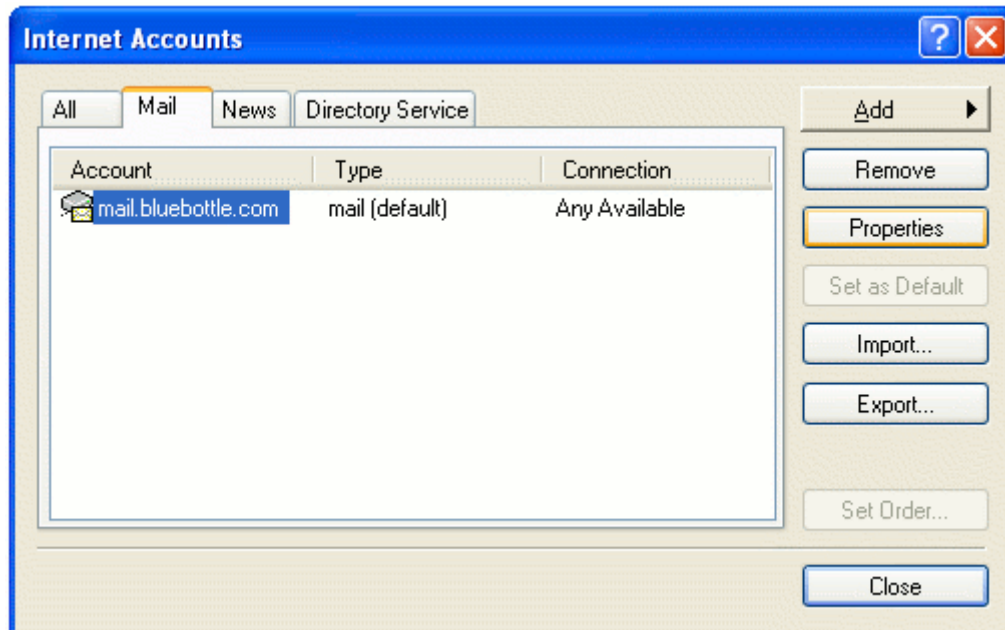
Log on using Secure Password Authentication (SPA)

< Back Next > Cancel

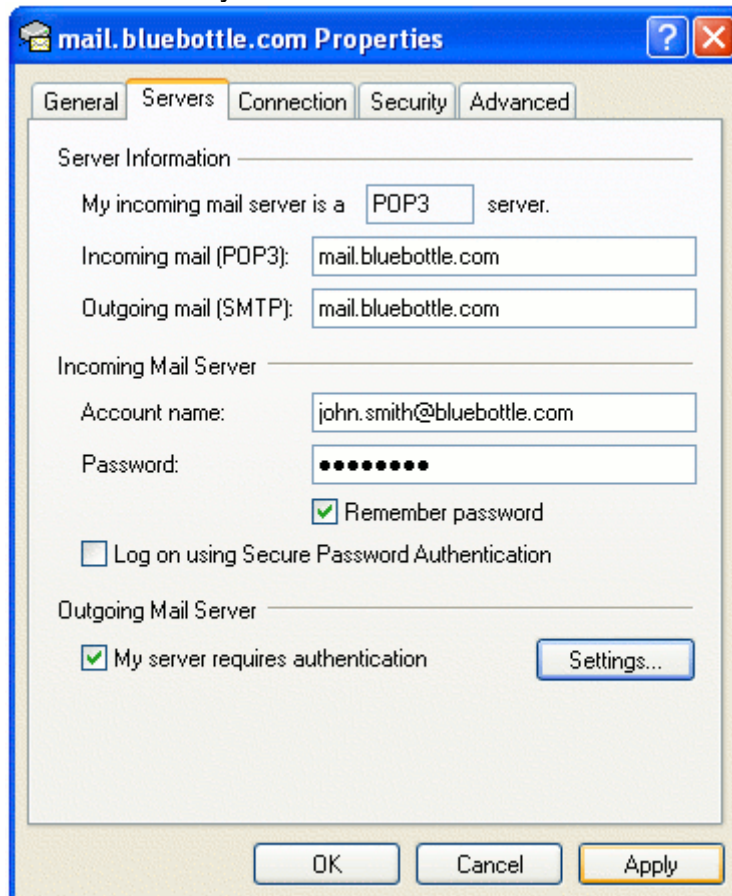
6. Enter your complete Bluebottle user name (including @bluebottle.com) where it says Account name.

Enter your password and select 'Remember password' if you don't want to be prompted for your password each time you check your email.

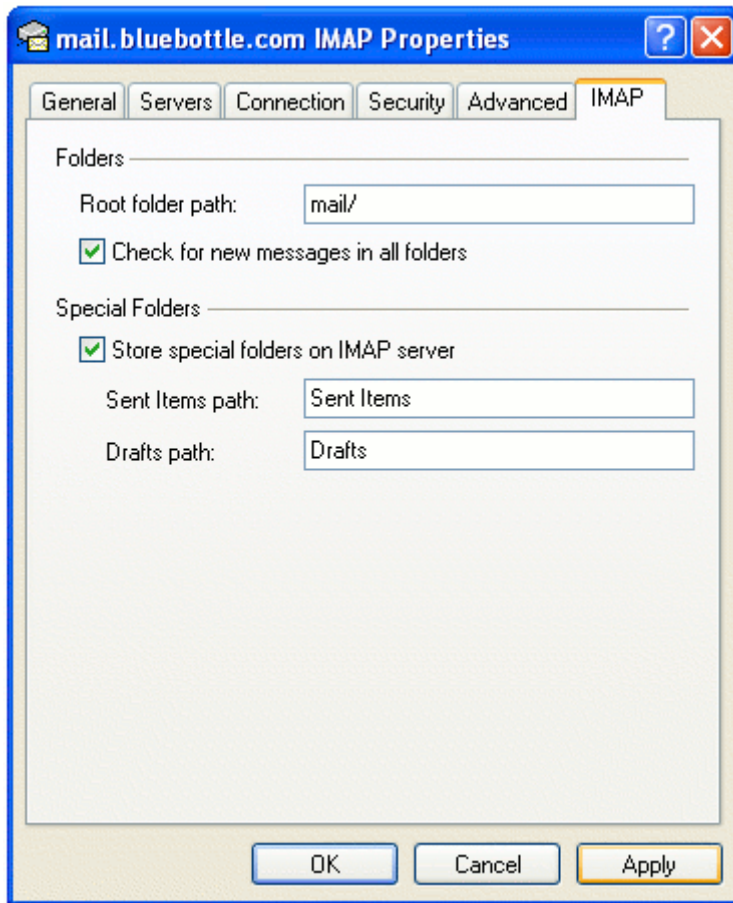
DO NOT select 'Log on using Secure Password Authentication (SPA)'.



7. Now select your Bluebottle account and click on the 'Properties' button.



8. Click on the 'Servers' tab and select 'My server requires authentication' and then click 'Apply'.



9. If you are setting up an IMAP account, after you have completed Step 8 click on the 'IMAP' tab. Now enter 'mail/' for the 'Root folder path' and click 'Apply'.